

Milesight

NDA A

AI 4X/12X Pro Bullet Plus Network Camera

IP67 + IK10



DATASHEET



Key Features

- ▶ NDA A Compliance (The fully NDA A-compliant products are well suited for government, defense and a range of projects subject to the NDA A.)
- ▶ Smart IR II (Combining the High Beam and Low Beam to adjust IR intensity to fit different lighting conditions.)
- ▶ HLC (High Light Compensation. Improving image visibility under strong light sources.)
- ▶ 140dB Super WDR (Excellent performance even when the ratio of the luminosity of brightest and darkest is up to 140dB.)
- ▶ Integrated Cable Management (Combining the power interface, PoE port, and other interfaces in the base neatly.)
- ▶ 1TB (Supporting ultra-large external microSD/SDHC/SDXC card storage up to 1TB.)
- ▶ Smart Stream (Bandwidth, storage and bit rate are saved with Smart Stream On, eg, H.265+ saves 70%~80% bandwidth that of H.264.)

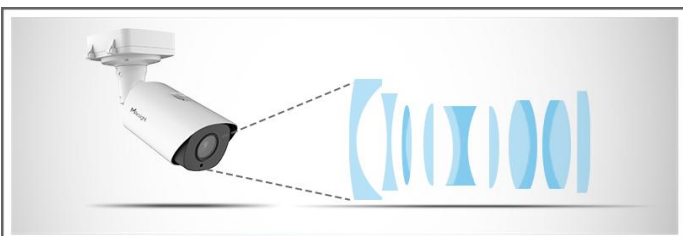
AI Video Analytics

- 8 intelligent VCA modes powered by AI engine, which can intelligently filter objects to focus on human and vehicle detection.
- Object Counting(Human & Vehicle) technology provides high accuracy and real-time data based on AI algorithm with statistic reports.
- Face Detection function detects human faces in the monitoring scene and captures the snapshots, which greatly enhances the monitoring efficiency.



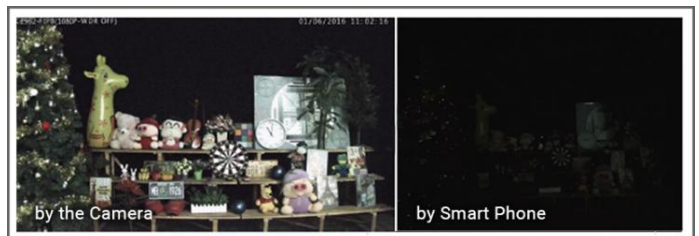
4X/12X Optical Zoom

The 4X/12X optical zoom can zoom up to distant subjects while still maintaining the clarity, delivering high quality video over the entire zoom



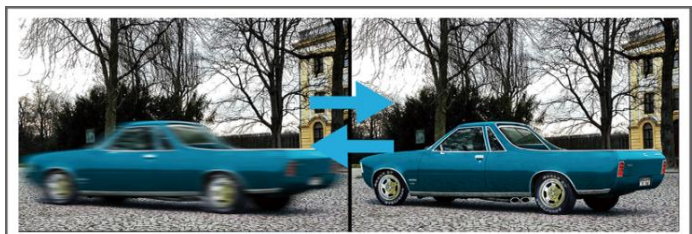
0.002Lux Ultra Low-light

The starlight camera is able to deliver high detailed color images even in low light environment reaching 0.002Lux(Color) or 0Lux(B/W), and near infrared light environments without any supplementary lighting.



90fps

With the industry leading frame rate reaching 90fps, the cameras can easily catch images with no latency despite of the high-speed movement, which is the best choice for the demanding requirements especially for intelligent cameras.



AI 4X/12X Pro Bullet Plus Network Camera



	Model	MS-C2966-X12R(T)PE (2MP)	MS-C4466-X4RPE (4MP)
Camera	Image Sensor	1/2.8" Progressive Scan CMOS	1/1.8" Progressive Scan CMOS
	Min. Illumination	Color: 0.005Lux@F1.6 B/W: 0Lux with IR on	Color: 0.002Lux@F1.6 B/W: 0Lux with IR on
	WDR	140dB Super WDR	
	Shutter Time	1/100000s~1s	
	DORI Distance	D: 82.5~996m O: 32.5~392m R: 16~196m I: 8~98m	D: 160~463m O: 63~182m R: 31.5~91m I: 15.5~45.5m
	IR Distance	Up to 180m	
	Day/Night Mode	Day/Night/Auto/Customize/Schedule	
	S/N	>55dB	
Lens	Lens	5.3~64mm, 12X Optical Zoom	8~32mm, 4X Optical Zoom
	Field of View	H61°~H5°/D69°~D5°/V36°~V2°	H44°~H13°/D51°~D15°/V25°~V7°
	Mount	Φ14	
	Focus Control	Auto/Manual	
	Aperture	F1.6~F2.8	F1.6-F1.7
	Iris Control	Auto	
Video	Max.Image Resolution	1920x1080	2688x1520
	Primary Stream	60Hz: 90fps@ (1920x1080) (Optional for T Series) , 60fps@ (1920x1080, 1280x960, 1280x720, 704x576) 50Hz: 90fps@ (1920x1080) (Optional for T Series) , 50fps@ (1920x1080, 1280x960, 1280x720, 704x576)	60Hz: 60fps@ (2688x1520, 2304x1296, 1920x1080, 1280x720) 50Hz: 50fps@ (2688x1520, 2304x1296, 1920x1080, 1280x720)
	Secondary Stream	60Hz: 60fps@ (704x576, 640x480, 640x360, 352x288, 320x240) 50Hz: 50fps@ (704x576, 640x480, 640x360, 352x288, 320x240)	
	Tertiary Stream	60Hz: 30fps@ (1920x1080, 1280x720, 704x576, 640x480, 640x360, 320x240) 50Hz: 25fps@ (1920x1080, 1280x720, 704x576, 640x480, 640x360, 320x240)	60Hz: 30fps@ (1280x720, 704x576, 640x480, 640x360, 320x240), 60Hz: 15fps@ (1920x1080) 50Hz: 25fps@ (1280x720, 704x576, 640x480, 640x360, 320x240), 50Hz: 15fps@ (1920x1080)
	Video Compression	H.265*/H.265(HEVC)/H.264*/H.264/MJPEG	
	Video Bit Rate	16Kbps~16Mbps(CBR/VBR Adjustable)	
Image	Privacy Masking	Up to 8 Areas (Mask Area and Mosaic Area are optional)	
	ROI	Up to 8 areas	
	Image Setting	Brightness/Contrast/Saturation/Sharpness	
	Image Enhancement	BLC, HLC, 2D DNR, 3D DNR, AGC, Defog, AWB, Deblur, Anti-flicker, Corridor Mode, LDC	
Interface	Ethernet	1*RJ45 10M/100M Ethernet Port	
	Audio I/O	1/1	
	Alarm I/O	1/1	
Network	Network Storage	NAS(Support NFS, SMB/CIFS), ANR	
	Protocol	IPv4/IPv6, ARP, TCP, UDP, RTP, RTSP, RTMP, HTTP, HTTPS, DNS, DDNS, DHCP, FTP, NTP, SMTP, SNMP, UPnP, Bonjour, SIP, PPPoE, VLAN, 802.1x, QoS, IGMP, ICMP, SSL,TLS 1.2	

AI 4X/12X Pro Bullet Plus Network Camera



Audio	Audio Compression	G.711/AAC/G.722/G.726	
	Audio Sampling Rate	8/16/32/44.1/48KHz	
	Audio Bit Rate	16~256kbps	
Intelligent Analytics	Video Analysis	VCA 2.0: Intrusion Detection, Region Entrance, Region Exiting, Advanced Motion Detection, Line Crossing, Loitering, Object Left, Object Removed	
	Attribute Extraction	Simultaneously detect up to 50 targets and capture humans and vehicles in real time. Recognize attributes including Upper and Lower Clothing Color, Hat, and Vehicle Types (Bicycle, Car, Motorcycle, Bus, Truck, E-scooter).	
	Face Detection&Face Attribute Recognition	Detect and capture faces, get real-time snapshots; The attributes include Age, Gender, Glasses, Mask and Cap; Support Faces Privacy Mode, the detected faces in the face detection area will be mosaic automatically.	
	Object Counting & Report	Count the number of objects crossing the line, optionally human and vehicle, Support regional people counting for up to 4 detection areas	
	Heat Map	The built-in statistical behavior analysis enables you to identify the busiest areas within the environment	
Event	Basic Event	Motion Detection, Tamper Detection, Network Disconnection, External Input, Audio Alarm, etc.	
	Exception	Network Disconnection, IP Address Filtering, Record Failed, SD Card Full, SD Card Uninitialized, SD Card Error, No SD Card, Watermark	
	Event Action	FTP Upload, SMTP Upload, SD Card Record, External Output, SIP Phone, HTTP Notification, etc	
System	Storage	Support Micro SD/SDHC/SDXC Card Local Storage, up to 1TB	
	SIP/VoIP Support	Yes, Voice & Video-over-IP	
	System Compatibility	ONVIF Profile G & M & S & T, API	
General	Working Temperature	-40℃~60℃	
	Working Humidity	0~95%(Non-condensing)	
	Power Supply	PoE (802.3at) / DC 12V±10%	
	Power Consumption	Min.: 3.5W (DC 12V), 4.2W(PoE) Max.: 13.5W (DC 12V), 16.1W(PoE)	Min.: 3.7W (DC 12V), 4.5W(PoE) Max.: 13W (DC 12V), 15.6W(PoE)
	Surge Protection	4KV	
	Weight	1447g	1445.8g
	Dimensions	320mmX134mmX126mm	
	Warranty	3/5 Years	
Certifications	EMC	CE-EMC (EN 55032, EN 55035), FCC (PART 15B)	
	Safety	UL: UL 62368-1, CE-LVD (EN IEC 62368-1)	
	Environment	CE-ROHS (Directive (EU) 2015/863 amending 2011/65/EU)	
	Protection	IP67, IK10	

AI 4X/12X Pro Bullet Plus Network Camera



	Model	MS-C5366-X12PE (5MP)	MS-C8266-X4PE (4K)
Camera	Image Sensor	1/2.8" Progressive Scan CMOS	1/1.8" Progressive Scan CMOS
	Min. Illumination	Color: 0.008Lux@F1.6 B/W: 0Lux with IR on	Color: 0.009Lux@F1.6 B/W: 0Lux with IR on
	WDR	120dB Super WDR	
	Shutter Time	1/100000s~1s	
	DORI Distance	D: 110~1330m O: 43~522m R: 21.5~261m I: 11~131m	D: 227~657m O: 89.5~259m R: 45~129m I: 22.5~65m
	IR Distance	Up to 180m	
	Day/Night Mode	Day/Night/Auto/Customize/Schedule	
	S/N	>55dB	
Lens	Lens	5.3~64mm, 12X Optical Zoom	8~32mm, 4X Optical Zoom
	Field of View	H57°~H4°/D69°~D5°/V44°~V1°	H44°~H13°/D51°~D15°/V25°~V7°
	Mount	Φ14	
	Focus Control	Auto/Manual	
	Aperture	F1.6~F2.8	F1.6-F1.7
	Iris Control	Auto	
Video	Max.Image Resolution	2592x1944	3840x2160
	Primary Stream	60Hz: 30fps@(2592x1944, 2592x1520), 45fps@(2048x1536), 60fps@(1920x1080, 1280x960, 1280x720) 50Hz: 25fps@(2592x1944, 2592x1520), 45fps@(2048x1536), 50fps@(1920x1080, 1280x960, 1280x720)	60Hz: 30fps@(3840x2160, 3072x2048, 2592x1944, 2592x1520, 2048x1536, 1920x1080, 1280x960, 1280x720, 704x576) 50Hz: 25fps@(3840x2160, 3072x2048, 2592x1944, 2592x1520, 2048x1536, 1920x1080, 1280x960, 1280x720, 704x576)
	Secondary Stream	60Hz: 30fps@(704x576, 640x480, 640x360, 352x288, 320x240) 50Hz: 25fps@(704x576, 640x480, 640x360, 352x288, 320x240)	
	Tertiary Stream	60Hz: 30fps@(2048x1536, 1920x1080, 1600x1200, 1280x720, 704x576, 640x480, 640x360, 320x240) 50Hz: 25fps@(2048x1536, 1920x1080, 1600x1200, 1280x720, 704x576, 640x480, 640x360, 320x240)	60Hz: 30fps@(1920x1080, 1280x720, 704x576, 640x480, 640x360, 320x240) 50Hz: 25fps@(1920x1080, 1280x720, 704x576, 640x480, 640x360, 320x240)
	Video Compression	H.265+/H.265(HEVC)/H.264+/H.264/MJPEG	
	Video Bit Rate	16Kbps~16Mbps(CBR/VBR Adjustable)	
Image	Privacy Masking	Up to 8 Areas (Mask Area and Mosaic Area are optional)	
	ROI	Up to 8 areas	
	Image Setting	Brightness/Contrast/Saturation/Sharpness	
	Image Enhancement	BLC, HLC, 2D DNR, 3D DNR, AGC, Defog, AWB, Deblur, Anti-flicker, Corridor Mode, LDC	
Interface	Ethernet	1*RJ45 10M/100M Ethernet Port	
	Audio I/O	1/1	
	Alarm I/O	1/1	

AI 4X/12X Pro Bullet Plus Network Camera



Network	Network Storage	NAS(Support NFS, SMB/CIFS), ANR	
	Protocol	IPv4/IPv6, ARP, TCP, UDP, RTCP, RTP, RTSP, RTMP, HTTP, HTTPS, DNS, DDNS, DHCP, FTP, NTP, SMTP, SNMP, UPnP, Bonjour, SIP, PPPoE, VLAN, 802.1x, QoS, IGMP, ICMP, SSL,TLS 1.2	
Audio	Audio Compression	G.711/AAC/G.722/G.726	
	Audio Sampling Rate	8/16/32/44.1/48KHz	
	Audio Bit Rate	16~256kbps	
Intelligent Analytics	Video Analysis	VCA 2.0: Intrusion Detection, Region Entrance, Region Exiting, Advanced Motion Detection, Line Crossing, Loitering, Object Left, Object Removed	
	Attribute Extraction	Simultaneously detect up to 50 targets and capture humans and vehicles in real time. Recognize attributes including Upper and Lower Clothing Color, Hat, and Vehicle Types (Bicycle, Car, Motorcycle, Bus, Truck, E-scooter).	
	Face Detection&Face Attribute Recognition	Detect and capture faces, get real-time snapshots; The attributes include Age, Gender, Glasses, Mask and Cap; Support Faces Privacy Mode, the detected faces in the face detection area will be mosaic automatically.	
	Object Counting & Report	Count the number of objects crossing the line, optionally human and vehicle, Support regional people counting for up to 4 detection areas	
	Heat Map	The built-in statistical behavior analysis enables you to identify the busiest areas within the environment	
Event	Basic Event	Motion Detection, Tamper Detection, Network Disconnection, External Input, Audio Alarm, etc.	
	Exception	Network Disconnection, IP Address Filtering, Record Failed, SD Card Full, SD Card Uninitialized, SD Card Error, No SD Card, Watermark	
	Event Action	FTP Upload, SMTP Upload, SD Card Record, External Output, SIP Phone, HTTP Notification, etc	
System	Storage	Support Micro SD/SDHC/SDXC Card Local Storage, up to 1TB	
	SIP/VoIP Support	Yes, Voice & Video-over-IP	
	System Compatibility	ONVIF Profile G & M & S & T, API	
General	Working Temperature	-40℃~60℃	
	Working Humidity	0~95%(Non-condensing)	
	Power Supply	PoE (802.3at) / DC 12V±10%	
	Power Consumption	Min.: 3.8W (DC 12V), 4.6W(PoE) Max.: 12.5W (DC 12V), 15.2W(PoE)	Min.: 4.4W (DC 12V), 5.4W(PoE) Max.: 13.2W (DC 12V), 16W(PoE)
	Surge Protection	4KV	
	Weight	1447g	1445.8g
	Dimensions	320mmX134mmX126mm	
	Warranty	3/5 Years	

AI 4X/12X Pro Bullet Plus Network Camera



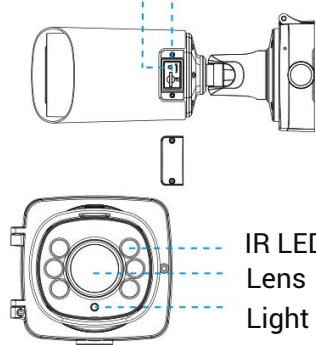
Certifications	EMC	CE-EMC (EN 55032, EN 55035), FCC (PART 15B)
	Safety	UL: UL 62368-1, CE-LVD (EN IEC 62368-1)
	Environment	CE-ROHS (Directive (EU) 2015/863 amending 2011/65/EU)
	Protection	IP67, IK10



Structure Diagrams

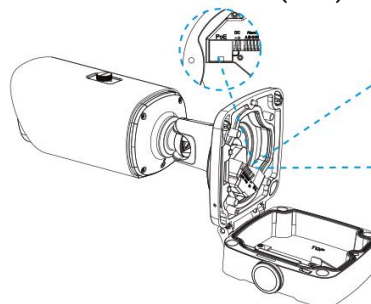
microSD/SDHC/SDXC Card Slot

Reset



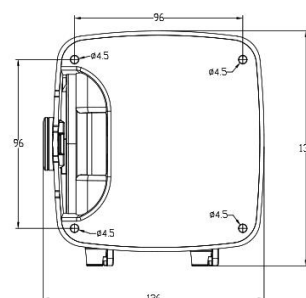
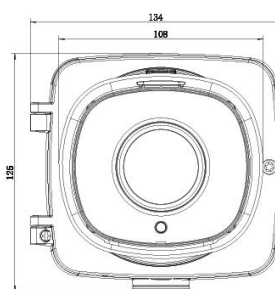
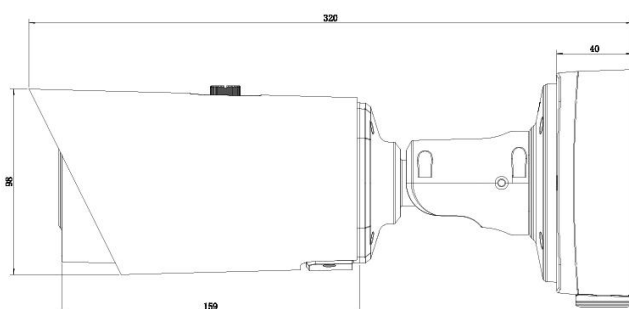
IR LEDs
Lens
Light Sensor

Ethernet Port(PoE)



Alarm In/Out
Audio In/Out

DC 12V



Units: mm

Accessories Support

A62 Junction Box(Default)

Weight: 510g

Dimensions: 134*126*40mm



A02 V2 Pole Mount

Weight: 1kg

Dimensions: 180*136*46mm



A03 External Corner Bracket

Weight: 900g

Dimensions: 170*152.5*76.3mm

